

PROJECT: _____	UNIT TAG: _____	QUANTITY: _____
REPRESENTATIVE: _____	TYPE OF SERVICE: _____	DATE: _____
ENGINEER: _____	SUBMITTED BY: _____	DATE: _____
CONTRACTOR: _____	APPROVED BY: _____	DATE: _____
	ORDER NO.: _____	DATE: _____

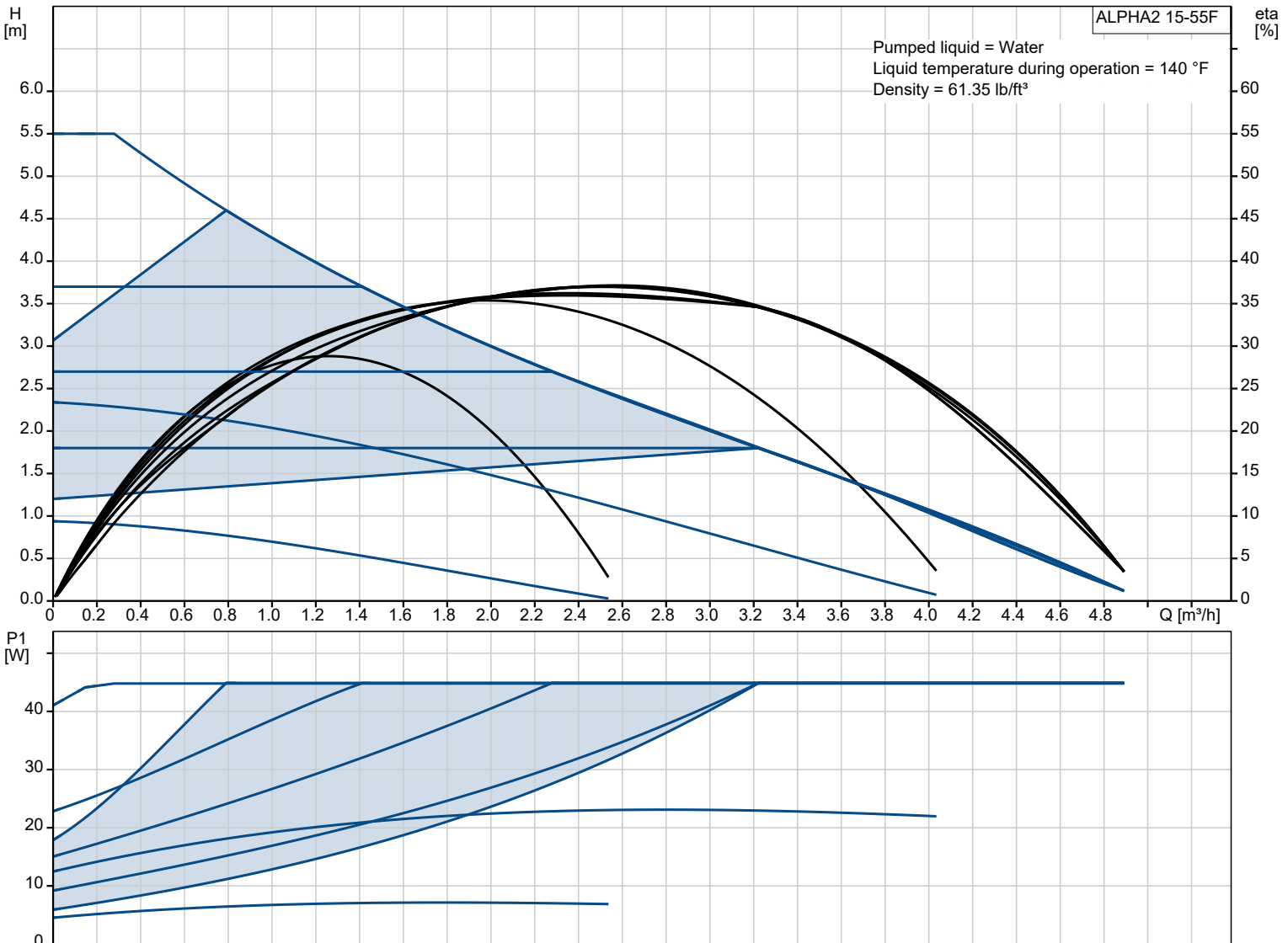


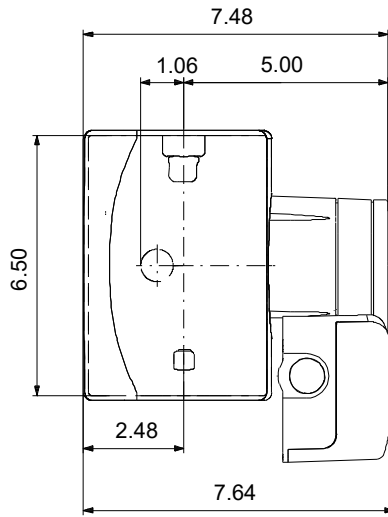
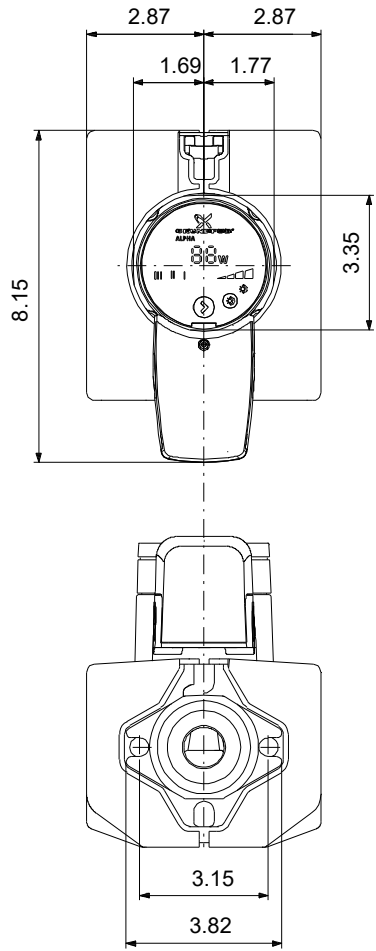
ALPHA2 15-55F

Featuring AUTOADAPT and constant-pressure control modes, the Grundfos ALPHA2 provides the lowest energy consumption and greatest flexibility in a high-efficiency ECM variable speed circulator designed for a wide variety of heating and hot water recirculation applications.

Note! Product picture may differ from actual product

Conditions of Service		Pump Data		Motor Data	
Liquid:	Water	Maximum operating pressure:	145.04 psi	P1 max:	5 .. 45 W
Temperature:	140 °F	Liquid temperature range:	35.6 .. 230 °F	Rated voltage:	115 V
Specific Gravity:	0.985	Maximum ambient temperature:	104 °F	Mains frequency:	60 Hz
		Approvals:	ETL, FCC	Enclosure class:	IP42
		Product number:	99163903	Insulation class:	F
				Motor protection:	NONE
				Thermal protection:	ELEC





Materials:

Pump housing: Cast iron

Pump housing: EN 1561 EN-GJL-150

Impeller: Composite

Qty. Description

1 ALPHA2 15-55F



Note! Product picture may differ from actual product

Product No.: [99163903](#)

The Grundfos ALPHA2 is a high-efficiency, variable speed circulator fitted with electronically commutated motor. Designed for circulating liquids in heating systems.

It features a constant pressure control mode and a constant curve with each three settings.

The factory default setting is AUTOADAPT which continuously adjusts the pump performance to the actual heat demand, i.e. the size of the system and the changing heat demand during the year.

The function will find the setting that provides optimal comfort with minimal energy consumption.

It contributes to fast, safe and easy commissioning.

The intuitive one-button operation and LED display makes the selection of the settings easy. The large LED display shows the current energy consumption in Watts and estimated flow in gallons per minute.

ALPHA2 materials and design are resistant to blockage from magnetite found in hydronic systems.

The robust startup enables ALPHA2 to continuously attempt to restart – indefinitely – in blocked rotor conditions.

ALPHA2 is complete with an integrated check-valve, and nut captures for flanges.

For power connection two options are available with either line cord or terminal box for conduit connections.

Liquid:

Pumped liquid: Water
Liquid temperature range: 35.6 .. 230 °F
Selected liquid temperature: 140 °F
Density: 61.35 lb/ft³

Technical:

TF class: 110
Approvals on nameplate: ETL, FCC

Materials:

Pump housing: Cast iron
EN 1561 EN-GJL-150
Impeller: Composite

Installation:

Range of ambient temperature: 32 .. 104 °F
Maximum operating pressure: 145.04 psi
Type of connection: GF
Pressure rating: PN 10
Port-to-port length: 6 1/2 in

Electrical data:

Power input - P1: 5 .. 45 W
Mains frequency: 60 Hz
Rated voltage: 1 x 115 V
Maximum current consumption: 0.1 .. 0.65 A
Enclosure class (IEC 34-5): IP42
Insulation class (IEC 85): F

Others:



Company name:

Created by:

Phone:

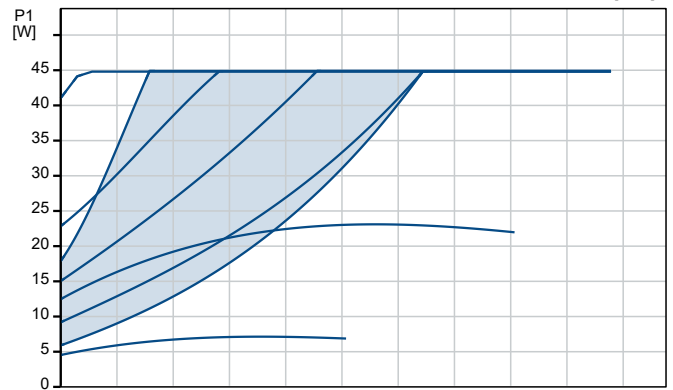
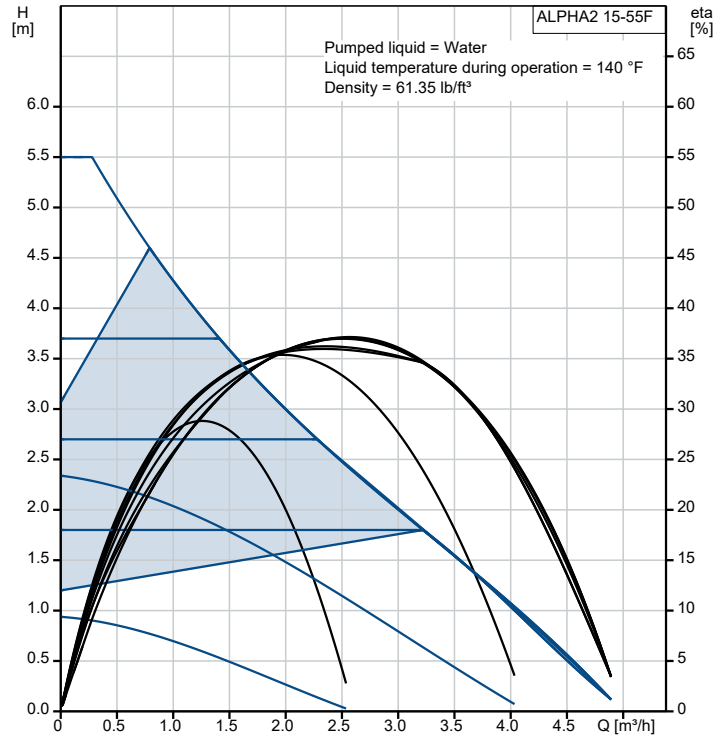
Date:

02/05/2022

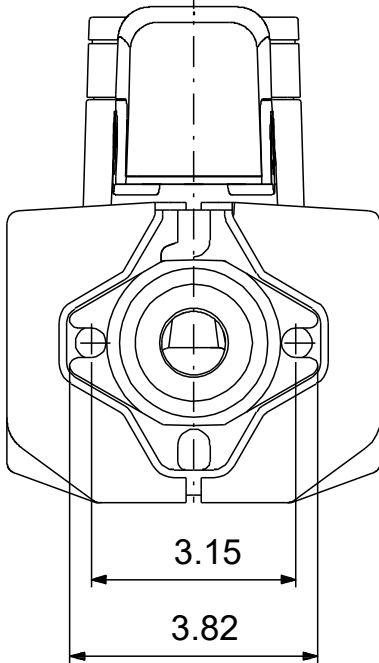
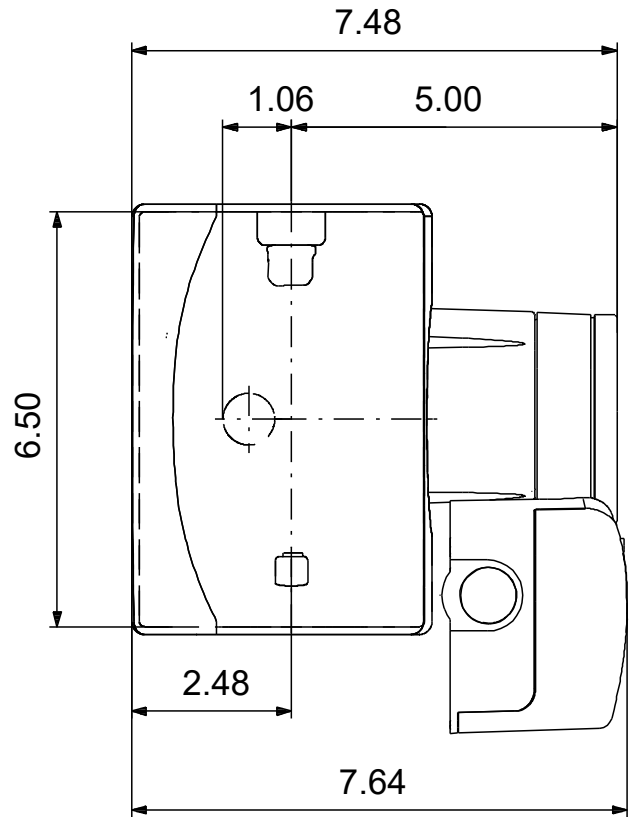
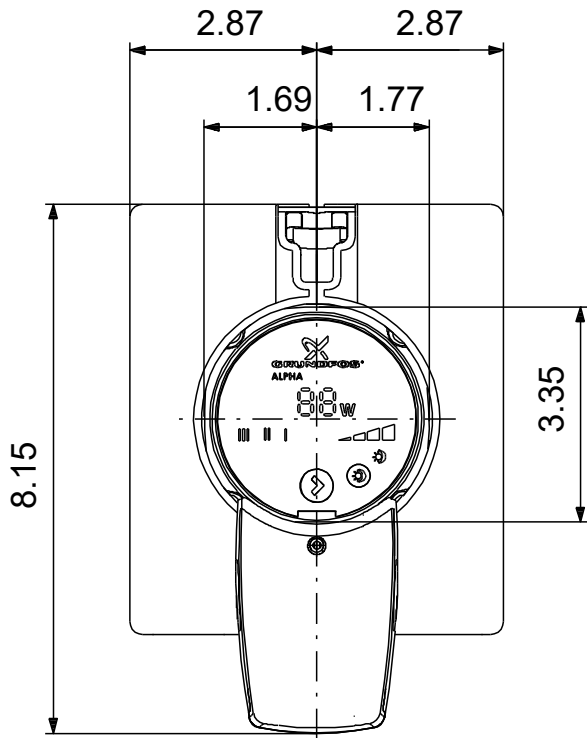
Qty.	Description
------	-------------

Net weight:	7.06 lb
Gross weight:	7.37 lb
Shipping volume:	0.28 ft ³

Description	Value
General information:	
Product name:	ALPHA2 15-55F
Product No:	99163903
EAN number:	5712607918224
Technical:	
Head max:	18.05 ft
TF class:	110
Approvals on nameplate:	ETL, FCC
Materials:	
Pump housing:	Cast iron
Pump housing:	EN 1561 EN-GJL-150
Impeller:	Composite
Installation:	
Range of ambient temperature:	32 .. 104 °F
Maximum operating pressure:	145.04 psi
Type of connection:	GF
Pressure rating:	PN 10
Port-to-port length:	6 1/2 in
Liquid:	
Pumped liquid:	Water
Liquid temperature range:	35.6 .. 230 °F
Selected liquid temperature:	140 °F
Density:	61.35 lb/ft³
Electrical data:	
Power input - P1:	5 .. 45 W
Mains frequency:	60 Hz
Rated voltage:	1 x 115 V
Maximum current consumption:	0.1 .. 0.65 A
Enclosure class (IEC 34-5):	IP42
Insulation class (IEC 85):	F
Built-in motor protection:	NONE
Thermal protec:	ELEC
Controls:	
Pos term box:	6H
Others:	
Net weight:	7.06 lb
Gross weight:	7.37 lb
Shipping volume:	0.28 ft³
Sales region:	USA



99163903 ALPHA2 15-55F 60 Hz



99163903 ALPHA2 15-55F 60 Hz

